



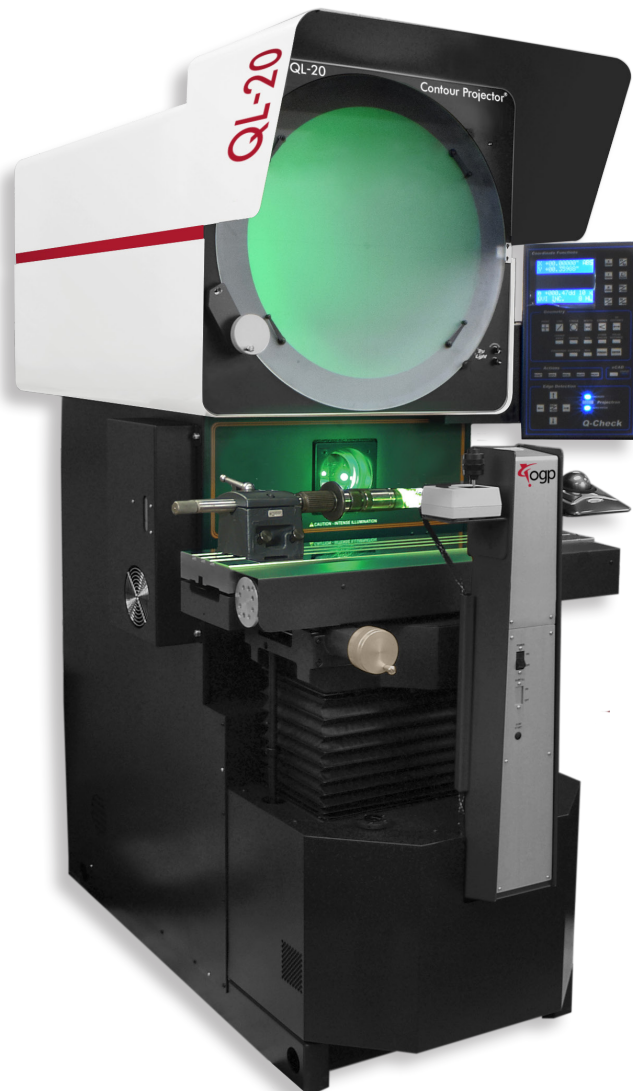
QL-20™ Contour Projector®

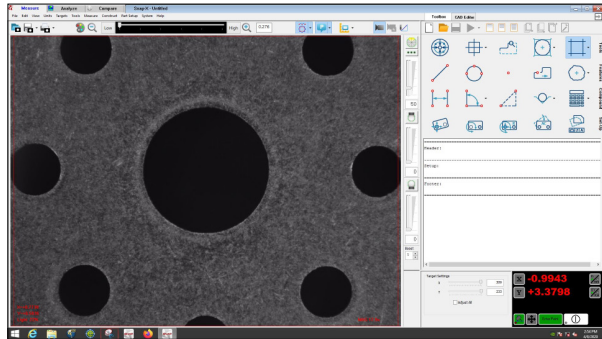
The **QL-20** optical comparator is a precision instrument designed for the shop floor. QL-20 has extensive standard features and a range of options that allow you to configure a system to meet your specific measurement needs.

The eye level 20 inch diameter screen and conveniently located DRO make measurements fast and easy.

- Includes high brightness TruLight® LED profile illumination with variable intensity control.
- High load capacity, nickel-plated worktable easily accommodates large, heavy machined parts and fixtures.
- Optional VidiProbe video measurement and eCAD® virtual chart gage systems offer full automation.

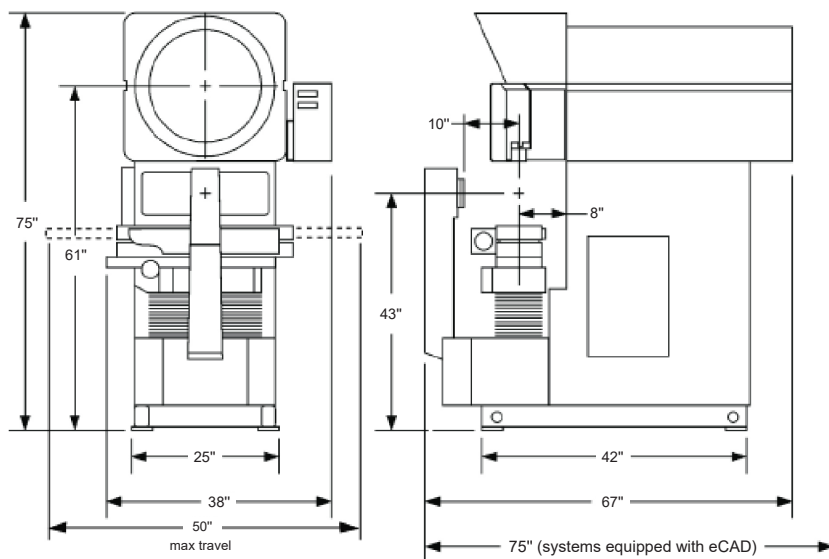
High Capacity Optical Comparator





Transform the traditional optical comparator into a fully automatic inspection system with optional VidiProbe and Measure-X® software. The video camera is internally mounted to enable simultaneous measurements using both the analog comparator screen and the digital video with Measure-X.

QL-20™ Contour Projector®



System Weight: 1,660 lb
Shipping Weight: 2,350 lb

	Standard	Optional
XY Travel Range	15" x 9"	15" x 10", 18" x 9", 18" x 10"
Helix Angle Range		± 7.5° with pivoting worktable assembly and zero stop
Z Focus Travel	3" with precision fine adjustment	
Throat Clearance	19"	
XY Scale Resolution	0.00004"	0.00002"
XY Drive System	Motorized, DC servo, with variable speed joystick and X & Y axis manual fine adjustment	
Worktable	Heavy duty cast iron nickel plated worktable, 32" x 8"	
Recommended Maximum Load Capacity	250 lb	
Optical System	Telecentric with upright, un-reversed image	
Optical Options¹		Adjustable direct projection iris; Swing-away lamphouse; Overscreen Fresnel lens; Surface concentrator (requires optional surface light); VidiProbe video automation package; eCAD™ for electronic CAD overlay and virtual charts
Edge Detection²		Projectron® internal automatic edge detection
Screen	20" diameter ground glass screen, with integral hood, 90° centerlines and clips for mounting standard overlay charts	
Protractor	Screen rotation protractor with ± 360° motion, digital display, 0.01° or 1' display	
Working Distance	8.4"	
Lens		10x, 20x, 31.25x, 50x, 62.5x, 100x
Lens Mount	Fixed, one position mount	Internal, motorized 5 position lens turret with automatic magnification identification
Illumination	Green LED profile light with continuously variable intensity control	White brightfield LED through-the-lens coaxial surface light with continuously variable intensity
DRO	Q-Check®	
Software		Measure-X Measure and Compare (included with VidiProbe) Measure-X Analyze (optional with VidiProbe) Measure-X Offline OGP® EVOLVE® SPC
Accessories		Rotary indexer; Overhead light shield; Fixture and calibration reticles; Overlay charts
Power Requirements	100-120 VAC or 200-240 VAC, 50/60 Hz, 1 phase, 1500 W	
Safe Operating Environment	15-30 °C, non-condensing	

¹Surface concentrator for use with lenses of 50x magnification and higher

²Projectron intended for use with lenses of 50x magnification and lower



Confidence. When Results Matter.™

World Headquarters: Rochester, NY, USA • 585.544.0400 • www.ogpnet.com

OGP Shanghai Co, Ltd: Shanghai, China

86.21.5045.8383/8989 • www.smartscope.com.cn

OGP Messtechnik GmbH: Hofheim-Wallau, Germany

49.6122.9968.0 • www.ogpmesstechnik.de

Optical Gaging (S) Pte Ltd: Singapore • 65.6741.8880 • www.smartscope.com.sg

© 2023 Quality Vision International Inc. Specifications subject to change without notice. All rights reserved. Trademarks are the properties of their respective owners.

Export of this product is controlled under U.S. Export Regulations. An Export License may be required for deliveries or re-export outside the United States. Part Number 794122-0523