

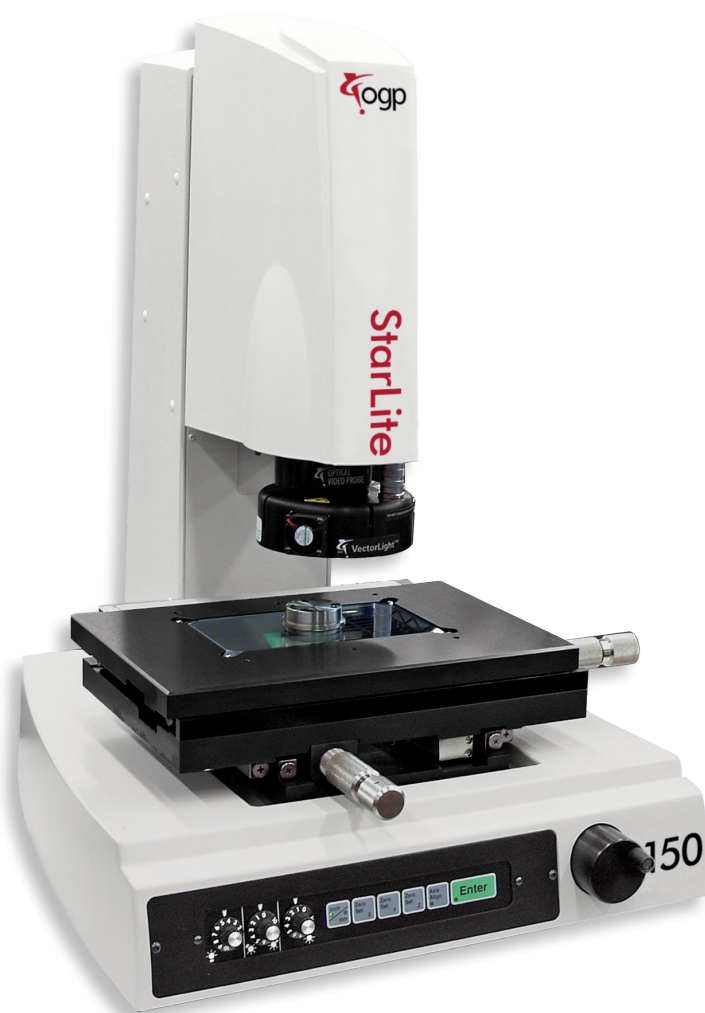
StarLite™ 150

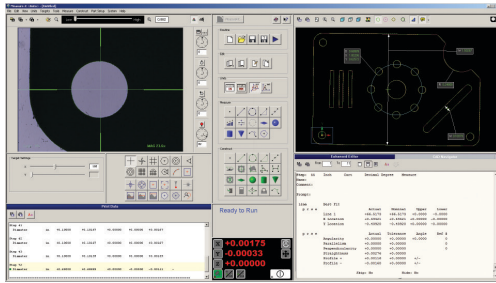
StarLite 150 is compact and reliable video measurement system combining fully automatic measurements with easy to use manual stage motion. StarLite's robust stage, motorized zoom optics and high resolution digital camera provide the accuracy you expect from a high-performance metrology system.

- 3-axis (X, Y, Z) measurement capability.
- Digital megapixel color camera coupled with a motorized zoom lens.
- Programmable all LED backlight, square-on surface light, and VectorLight™ programmable ring light for the ultimate lighting flexibility.

StarLite 150 Measuring Range (mm)			
	X	Y	Z
150	150	75	125

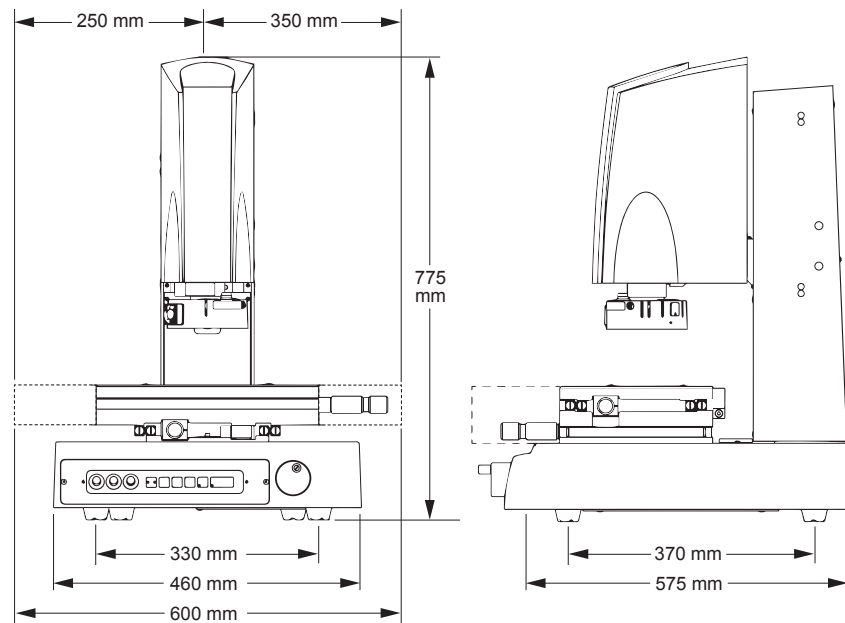
Semi-automatic, Compact, Workbench System





Measurement Software

Measure-X® is the world's most popular video metrology software. Measure-X makes it easy for StarLite to accurately measure fine features that require multi-step measurement routines. All measurements are fully automatic. Measure-X guides the user to position each feature using the manual stage controls.



System Weight: 50 kg
Shipping Weight: 155 kg

	Standard		Optional	
X, Y, Z Travel	150 x 75 x 125 mm			
X, Y, Z Scale Resolution	1.0 µm			
Stage Drive System	Manual with coarse and fine X, Y, Z position adjustment knobs			
Max Recommended Stage Load	7 kg			
Working Distance	62 mm (with standard VectorLight)		Up to 133 mm (0.5x lens attachment)	
Imaging Optics	6.5:1, 10 position motorized zoom lens			
Lens Attachments			0.5x, 0.75x, 1.5x, 2.0x	
Field of View <small>*Uses optical and digital zoom</small>	Low Mag	High Mag*	Low Mag (0.5x)	High Mag* (2.0x)
	7.3 mm x 5.5 mm	0.5 mm x 0.4 mm	14.6 mm x 11.0 mm	0.27 mm x 0.20 mm
Metrology Camera	Digital megapixel Color Metrology Camera			
Magnification on 24" LCD Monitor	24x to 370x on-screen digital/optical magnification standard with full feature Measure-X layout		12x to 740x on-screen digital/optical magnification with optional add-on lenses and dual monitor user interface	
Illumination	LED VectorLight SP programmable ring light with 6 rings and 7 sectors, LED backlight, LED square-on surface light		LED VectorLight SF programmable ring light with 6 rings and 8 sectors, LED backlight, LED square-on surface light (reduced working clearance)	
Controller	Standard system controller with networking and communication ports		Single flat panel LCD monitor, or dual flat panel LCD monitors; keyboard, mouse	
Software	Measure-X		MeasureFit® Plus, Measure-X Offline, CAD interface, SmartProfile®, OGP® EVOLVE® SPC	
Miscellaneous Options			NIST traceable calibration artifact, footswitch	
Power	100-120 VAC or 200-240 VAC, 50/60 Hz, 1 phase, 250W			
Operating Environment	Temperature 15-30 °C, non-condensing			
Rated Environment	Temperature 18-22 °C, stable to ± 1 °C, max rate of change 1 °C / hour, max vertical gradient of 1 °C / meter; 30-80% humidity; vibration <0.001g below 15 Hz			
XY Area Accuracy	$E_z: (4.5 + 8L/1000) \mu m$			
Z Linear Accuracy	$E_z: (7.0 + 8L/1000) \mu m$			

Accuracy is evaluated with a QVI verification procedure where "L" is measured length in millimeters. Specifications apply within the rated environment. Standard optical specifications apply at the maximum optical magnification of the standard configuration. XY Accuracy applies with an evenly distributed load up to 5 kg in the standard measuring plane. The standard measuring plane is defined as a plane that is within 25 mm of the worktable surface. Depending on load distribution, accuracy at maximum payload may be less than standard.



Confidence. When Results Matter.™

Optical Gaging Products, a division of Quality Vision International
850 Hudson Avenue • Rochester, NY 14621 • USA
Phone: (585) 544-0400 • (800) 647-4243 • Fax: (585) 544-8092
info@ogpnet.com
www.ogpnet.com