

**StarLite 250 and 300** models offer high-performance on the workbench. StarLite systems feature reliable motorized zoom optics and high-resolution digital cameras to provide the accuracy you need.

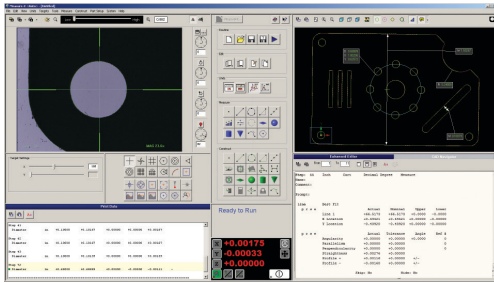
- 3-axis (X, Y, Z) measurement capability with motorized autofocus.
- Digital megapixel color camera coupled with a motorized zoom lens.
- Programmable all LED backlight, square-on surface light, and VectorLight™ programmable ring light for the ultimate lighting flexibility.

StarLite Measuring Ranges (mm)				
Models		X	Y	Z
	250	300	150	150
	300	300	300	150

## Semi-automatic, Compact, Workbench System

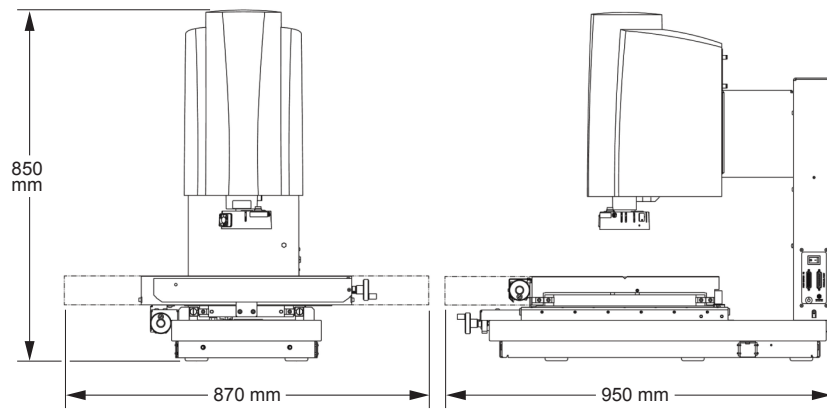


# StarLite™ 250|300



## Measurement Software

Measure-X® is the world's most popular video metrology software. Measure-X makes it easy for StarLite to accurately measure fine features that require multi-step measurement routines. All measurements are fully automatic. Measure-X guides the user to position each feature using the manual stage controls.



StarLite 300 Model Shown

System Weight:	Shipping Weight:
250 Model: 120 kg	250 Model: 255 kg
300 Model: 160 kg	300 Model: 300 kg

		Standard	Optional	
X, Y, Z Travel	250	300 x 150 x 150 mm		
	300	300 x 300 x 150 mm		
X, Y, Z Scale Resolution		1.0 μm		
Stage Drive System		Precision compound stage with manual XY axes, motorized Z-axis		
Max Recommended Stage Load		23 kg		
Working Distance		62 mm (with standard VectorLight)	Up to 133 mm (0.5x lens attachment)	
Imaging Optics		6.5:1, 10 position motorized zoom lens		
Lens Attachments			0.5x, 0.75x, 1.5x, 2.0x	
Metrology Camera		Digital megapixel color metrology camera		
Field of View <small>*Uses optical and digital zoom</small>	Low Mag	High Mag*	Low Mag (0.5X)	High Mag* (2.0X)
	7.3 mm x 5.5 mm	0.5 mm x 0.4 mm	14.6 mm x 11.0 mm	0.27 mm x 0.20 mm
Magnification on 24” LCD Monitor		24x to 370x on-screen digital/optical magnification standard with full feature Measure-X layout		12x to 740x on-screen digital/optical magnification with optional add-on lenses and dual monitor user interface
Illumination		LED VectorLight SP programmable ring light with 6 rings and 7 sectors, LED backlight, LED square-on surface light		LED VectorLight SF programmable ring light with 6 rings and 8 sectors, LED backlight, LED square-on surface light (reduced working clearance)
Controller		Standard system controller with networking and communication ports		Single flat panel LCD monitor, or dual flat panel LCD monitors; keyboard, mouse
Software		Measure-X		MeasureFit® Plus, CAD interface, SmartProfile®, OGP® EVOLVE® SPC
Miscellaneous Options		NIST traceable calibration artifact, footswitch		
Power		100-120 VAC or 200-240 VAC, 50/60 Hz, 1 phase, 250W		
Operating Environment		Temperature 15-30 °C, non-condensing		
Rated Environment		Temperature 18-22 °C, stable to ± 1 °C, max rate of change 1 °C / hour, max vertical gradient of 1 °C / meter; 30-80% humidity; vibration <0.001g below 15 Hz		
X,Y Linear Accuracy		E <sub>1</sub> : (2.5 + 6L/1000) μm		
XY Area Accuracy		E <sub>2</sub> : (3.5 + 6L/1000) μm (250 Model) E <sub>2</sub> : (4.5 + 6L/1000) μm (300 Model)		
Z Linear Accuracy		E <sub>1</sub> : (5.0 + 8L/1000) μm		

Accuracy is evaluated with a QVI verification procedure where "L" is measured length in millimeters. Specifications apply within the rated environment. Standard optical specifications apply at the maximum optical magnification of the standard configuration. XY Accuracy applies with an evenly distributed load up to 5 kg in the standard measuring plane. The standard measuring plane is defined as a plane that is within 25 mm of the worktable surface. Depending on load distribution, accuracy at maximum payload may be less than standard.



Confidence. When Results Matter.™

World Headquarters: Rochester, NY, USA • 585.544.0400 • [www.ogpnet.com](http://www.ogpnet.com)

OGP Shanghai Co, Ltd: Shanghai, China

86.21.5045.8383/8989 • [www.smartscope.com.cn](http://www.smartscope.com.cn)

OGP Messtechnik GmbH: Hofheim-Wallau, Germany

49.6122.9968.0 • [www.ogpmesstechnik.de](http://www.ogpmesstechnik.de)

Optical Gaging (S) Pte Ltd: Singapore • 65.6741.8880 • [www.smartscope.com.sg](http://www.smartscope.com.sg)

© 2021 Quality Vision International Inc. Specifications subject to change without notice. All rights reserved. Trademarks are the properties of their respective owners.

Export of this product is controlled under U.S. Export Regulations. An Export License may be required for deliveries or re-export outside the United States. Part Number 7941130521