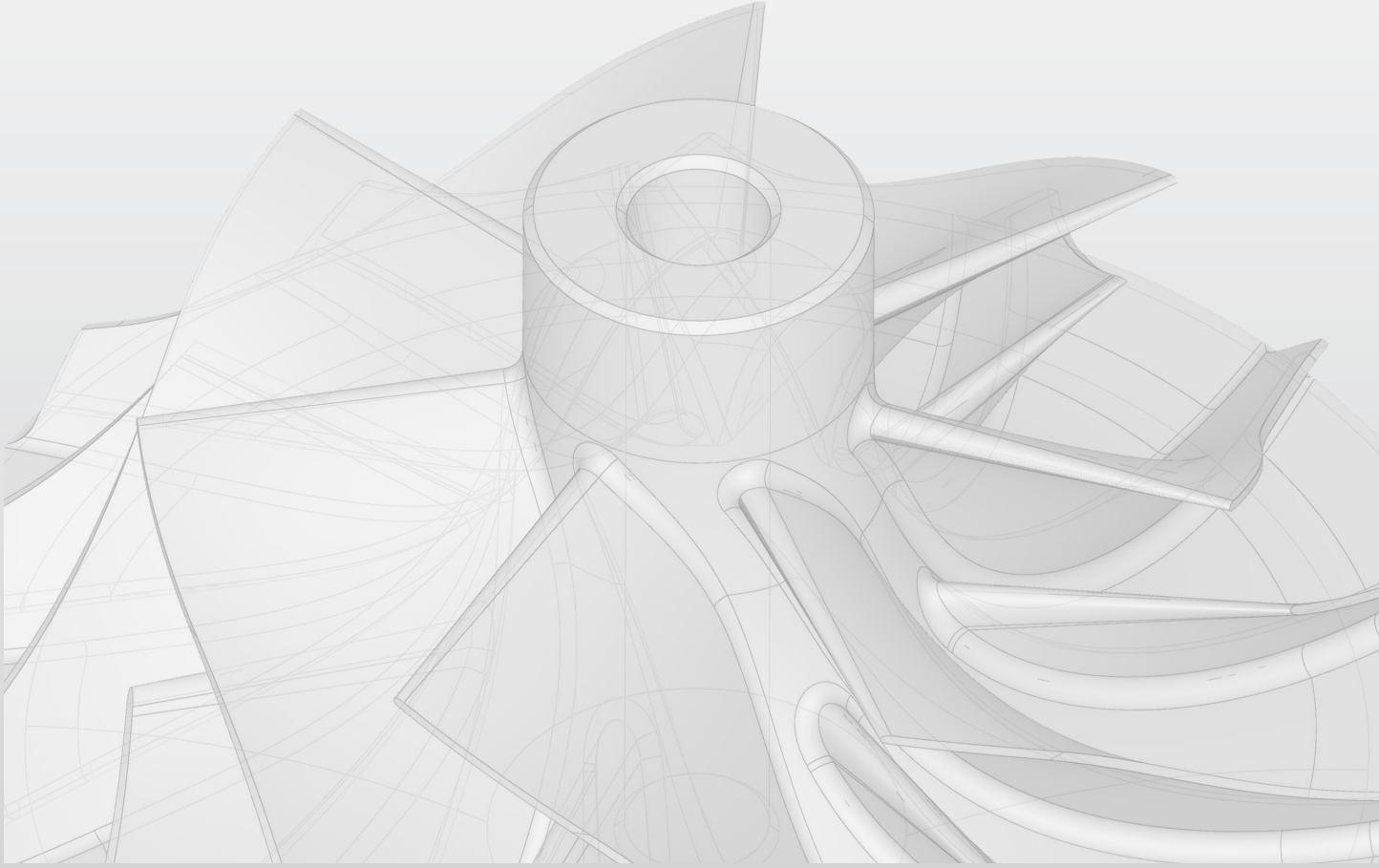
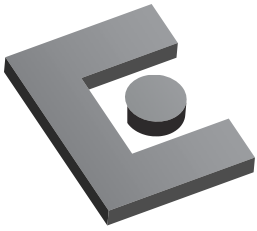




EVOLVE Suite

Model-Based Software Suite



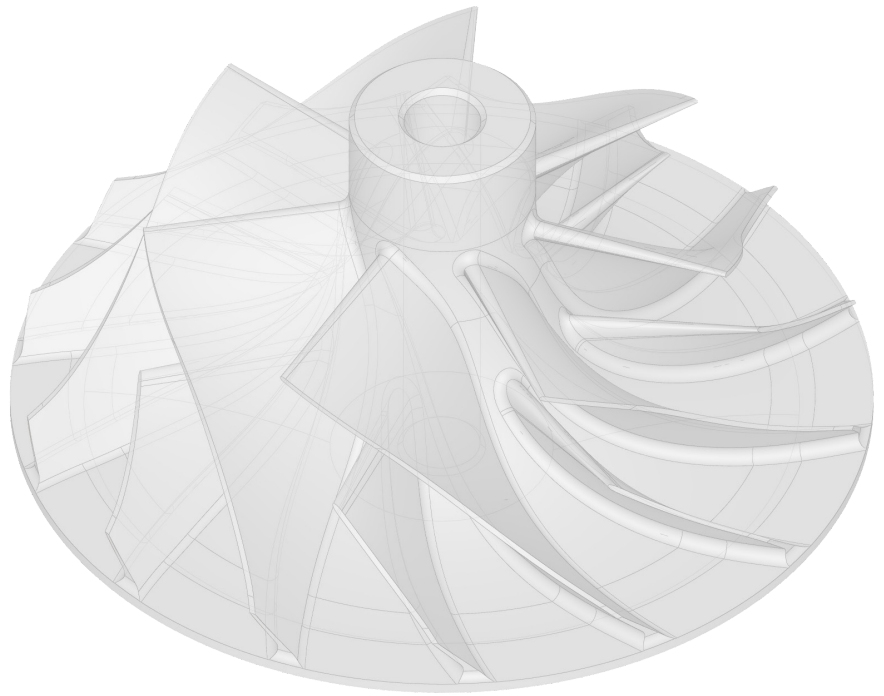


EVOLVE Suite

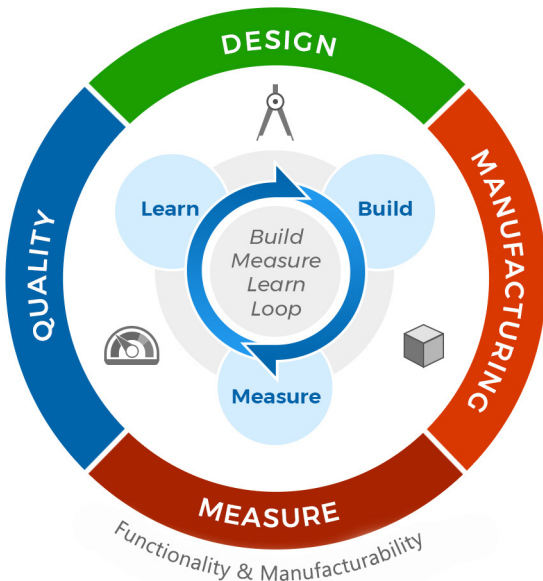
EVOLVE Suite

The EVOLVE software suite from OGP optimizes design, production and inspection processes enabling manufacturers to shorten product design & development time, improve quality, and reduce costs through improved efficiency.

EVOLVE uses a part's three dimensional CAD model as the basis for all tolerance evaluations, statistics and manufacturing data.



Benefits



- ✓ One understanding and consistent use of the language of Geometric Dimensioning and Tolerancing (GD&T) and Geometrical Product Specification (GPS)
- ✓ Designers get assistance and help directly in the model they are working on
- ✓ Reduce rework costs of design changes by getting them right the first time
- ✓ One standards rules engine for all users reduces uncertainty from differing software algorithms
- ✓ Seamlessly move models downstream and upstream
- ✓ Normalize inspection processes with hardware independent software



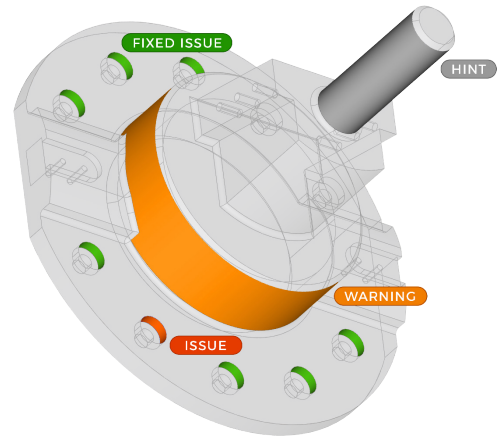
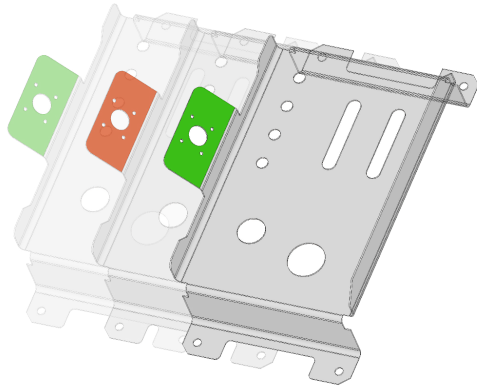
EVOLVE Suite Model-Based Family of Software

The EVOLVE Product Family



EVOLVE Design

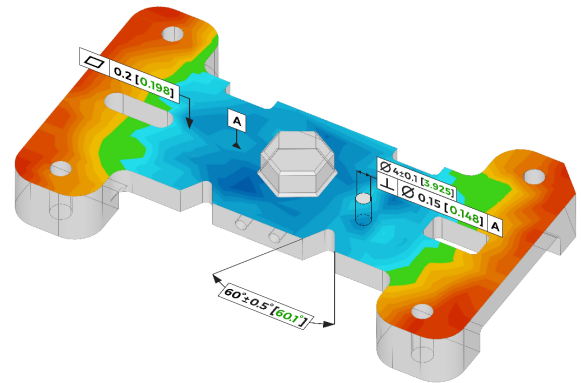
EVOLVE Design is Computer-Aided Engineering (CAE) tolerancing software that helps design engineers apply GD&T (GPS) tolerances to their CAD models correctly. EVOLVE Design proofs GD&T (GPS) tolerances directly in the model. It highlights potential tolerancing problems and provides recommendations through explanatory systems that show relevant guidance based on the chosen GD&T (GPS) standard.



EVOLVE Manufacturing

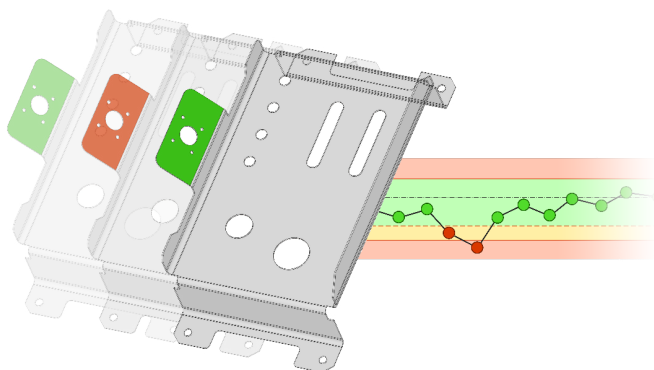
EVOLVE Manufacturing helps identify systematic problems with manufactured parts and recommends solutions to minimize manufacturing errors while improving the part design GD&T (GPS).

EVOLVE Manufacturing helps determine why a part has failed during the GD&T evaluation and which corrective actions can fix the manufacturing process to avoid future failures.



EVOLVE SmartProfile

EVOLVE SmartProfile® from OGP is the world's leading dimensional analysis software. SmartProfile provides guidance for adding or modifying part design tolerances based on actual part inspection results. It combines measurement data with the CAD model of the part and automatically runs GD&T or GPS evaluations. Its rich set of tools allow engineers to analyze and solve complex manufacturing problems.



EVOLVE SPC

EVOLVE SPC is a full statistical process control software solution usable as a standalone product with existing measuring systems or integrated into the EVOLVE Suite.

Statistical information is presented in the 3D CAD model as tables and graphs of individual features or of the entire model, making it easier to see process variations by characteristic.

OGP – Confidence. When Results Matter

The EVOLVE software suite from OGP is developed by KOTEM®, who is the worldwide leading developer of software for dimensional analysis. The EVOLVE suite of advanced GD&T and fitting software helps manufacturers integrate quality inspection data with their manufacturing and design workflows. KOTEM and OGP are Quality Vision International companies.

QVI® (Quality Vision International) is the world's largest vision metrology company. Founded in 1945, QVI is the world leader in the application of optical, electronic and software technologies into vision and multisensor measuring systems for manufacturing quality control.

To learn more about the EVOLVE suite of software solutions, go to:

www.ogpnet.com/evolve

EVOLVE is fully compliant with all internationally accepted GD&T Standards:



ISO 1101



ASME Y14.5M-1 994



ASME Y14.5-2009



ASME Y14.5-2018

EVOLVE Suite

Model-Based Family of Software:



EVOLVE **Design** helps designers correctly apply GD&T (GPS) specifications by proofing the callouts in the CAD Model and providing guidance directly from the standards.



EVOLVE **Manufacturing** analyzes measurement results from a manufacturing point of view, indicating why a part has failed the GD&T evaluation and helping the user determine specific corrective actions to the manufacturing process.



EVOLVE **SmartProfile** combines measurement data with the CAD model and automatically runs GD&T evaluations to ASME or ISO standards.



EVOLVE **SPC** is a full statistical process control software solution usable as a standalone product with existing measuring systems or integrated into the EVOLVE Suite.



Confidence. When Results Matter.™

World Headquarters: Rochester, NY, USA • 585.544.0400 • www.ogpnet.com

OGP Shanghai Co, Ltd: Shanghai, China

86.21.5045.8383/8989 • www.smartscope.com.cn

OGP Messtechnik GmbH: Hofheim-Wallau, Germany

49.6122.9968.0 • www.ogpmesstechnik.de

Optical Gaging (S) Pte Ltd: Singapore • 65.6741.8880 • www.smartscope.com.sg