



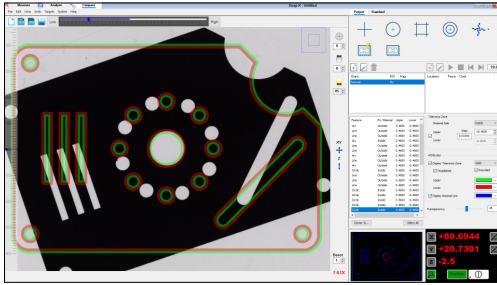
**c-vision Lite**, an easy to use shop floor video contour projector that sits on a workbench and offers:

- **Accurate Image/Low Distortion –** Fixed lens telecentric optics with a 6 megapixel digital metrology camera providing three field of view sizes of 10x, 20x, and 50x with a large depth of field and instantaneous mag change.
- **Rugged Design –** The motorized XY table motion is driven by precision linear scales and fine adjusters. The helix stage is perfect for checking threads. All LED illumination for ultra-bright, long-life.
- **Measure-X®: Powerful Software –** Display standard and custom overlay charts in Compare mode; Launch Measure mode for fully automatic video measurement; perform GD&T fitting in Analyze mode.

## Easy to Use Benchtop Video Contour Projector®

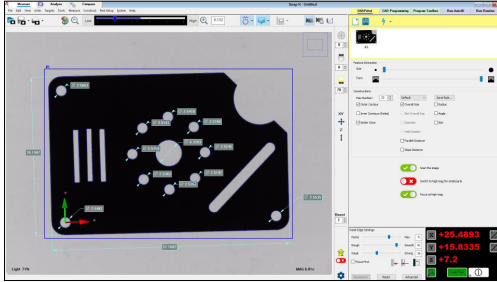


Shown with optional LED ring light.



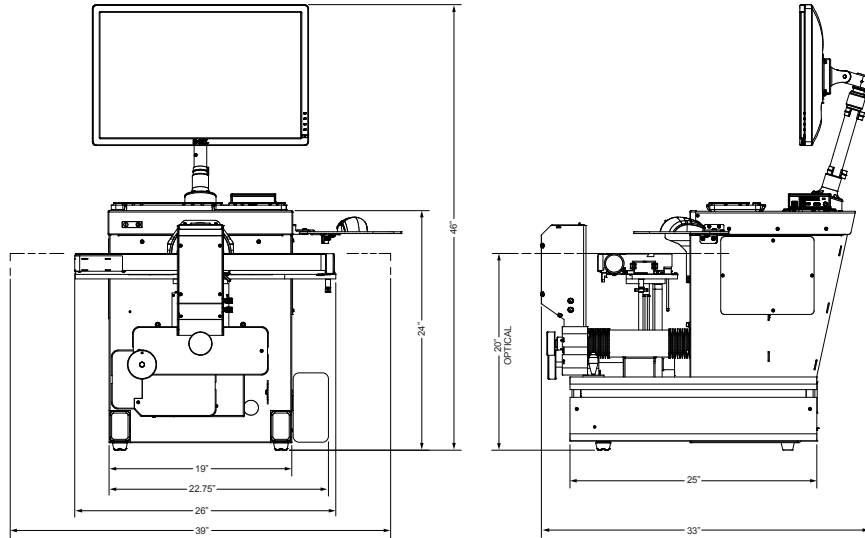
### Measure-X Compare Software

Measure-X Compare software provides a range of standard comparator charts for virtual gaging such as centerline and radius, as well as custom charts based on the part CAD design.



### Measure-X Measure Software

Measure-X Measure software provides fully automatic video measurement.



System Weight: 285 lb  
Shipping Weight: 410 lb

	Standard			Optional
<b>XYZ Travel</b>	12" x 5" x 1.25"			
<b>XY Scale Resolution</b>	0.00004"			0.00002"
<b>Drive System</b>	Motorized with variable speed joystick control and manual fine adjustment			
<b>Worktable</b>	Hard coat anodized aluminum worktable, 16" x 5", with dovetail fixturing slot with 45 lb load capacity			
<b>Helix Angle Range</b>	± 6.5° with pivoting worktable assembly and zero stop			
<b>Throat Clearance</b>	10.0"			
<b>Optics</b>	Fixed magnification with three field of view sizes, fully telecentric, long depth of field, upright and fully corrected image			
<b>Illumination</b>	LED profile light with continuously variable intensity			LED oblique 8-sector ring light
<b>Magnification</b>	<b>Low Magnification</b> 1.88" Field of View (FOV) 1.6" Depth of Field (DOF) 4" Working Distance (WD)	<b>Medium Magnification</b> 1.13" Field of View (FOV) 1.2" Depth of Field (DOF) 4" Working Distance (WD)	<b>High Magnification</b> 0.47" Field of View (FOV) 1.0" Depth of Field (DOF) 4" Working Distance (WD)	
<b>Metrology Camera</b>	6 megapixel digital metrology camera			
<b>Software</b>	Measure-X Measure and Compare			Measure-X Analyze, Measure-X Offline, EVOLVE® SPC
<b>System Controller</b>	Windows® based, with up-to-date processor and onboard network/communication ports			
<b>Controller Options</b>	32" flat panel LCD monitor, keyboard, 3-button mouse			
<b>Accessories</b>				Motorized rotary indexer; Calibration reticles; Machine stand; Rotary vise; Staging centers and V-blocks
<b>Power Requirements</b>	100-120 VAC or 200-240 VAC, 50/60 Hz, 1 phase, 400 W			
<b>Safe Operating Environment</b>	59-86 °F, non-condensing			
<b>Rated Environment</b>	Temperature 64-72 °F, stable at ± 2 °F, max rate of change 2 °F/hour, max vertical gradient 1.5 °F/yard; 30-80% humidity; vibration <0.001g below 15 Hz			
<b>Field of View Accuracy (E<sub>2</sub>)</b>	Low Mag: 0.0004" Med Mag: 0.0003" High Mag: 0.0002"			
<b>Stage Accuracy (E<sub>2</sub>)</b>	(500+10L) μinch			

Accuracy is evaluated with a QVI® compensation and verification procedure where "L" is measured length in inches. Specifications apply within the rated environment. XY Accuracy applies with an evenly distributed load up to 11 lb in the standard measuring plane. The standard measuring plane is defined as perpendicular to the optical axis within 0.02 inch, and within 0.20 inch of best focus. Depending on load distribution, accuracy at maximum payload may be less than standard.



**Confidence. When Results Matter.™**

**World Headquarters:** Rochester, NY, USA • 585.544.0400 • [www.ogpnet.com](http://www.ogpnet.com)

**OGP Shanghai Co, Ltd:** Shanghai, China  
86.21.5045.8383/8989 • [www.smartscope.com.cn](http://www.smartscope.com.cn)

**OGP Messtechnik GmbH:** Hofheim-Wallau, Germany  
49.6122.9968.0 • [www.ogpmesstechnik.de](http://www.ogpmesstechnik.de)

**Optical Gaging (S) Pte Ltd:** Singapore • 65.6741.8880 • [www.smartscope.com.sg](http://www.smartscope.com.sg)