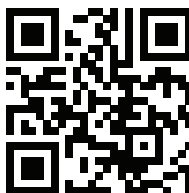
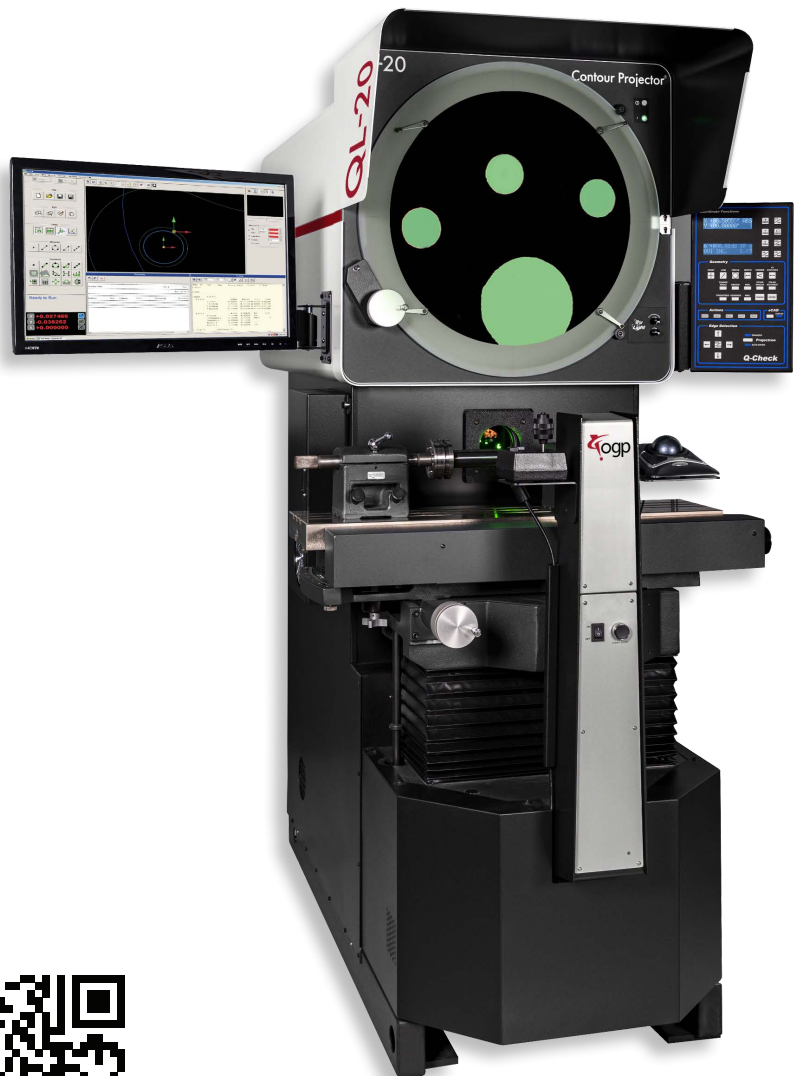


eChek is designed to let the operator program directly from the CAD file to generate a full measurement routine. eChek provides:

- **Full measurement, Construction Functionality –**
Measure points, midpoints, angles, lines, arcs, circles, distances, widths, included angles, angle intersections, line/circle intersections, point-to-point distances, gage ball tangent to two lines, and gage ball between two non-parallel lines.
- **Full CNC Operation –**
Hands-off CNC operation, including automatic worktable motion and edge detection (requires Projectron™).
- **Additional Functionality –**
Intuitive, full-featured user interface allows simultaneous viewing of the model, edit, data, and status windows, with no tabbing or pulldown menus.

Automatic CNC Measuring Package for OGP® Comparators

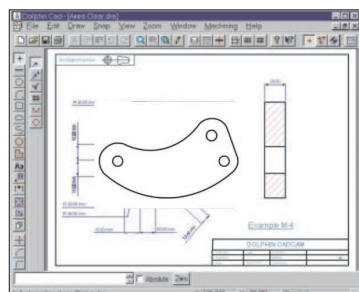


Available on Focus™, QL-20™, and QL-30™ Contour Projectors®.

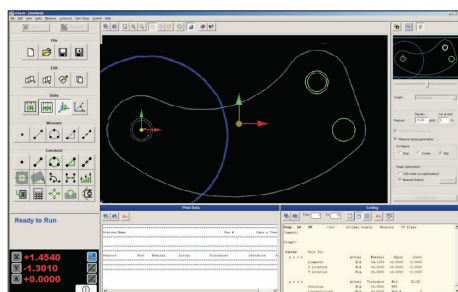
Options:

- eChek offline has the ability to define tolerances, import CAD files, create alignment methods, and program critical inspection areas from a remote location
- Supports optional 3-Axis Rotary Indexer (Automatic CNC)

From CAD...



...to eChek



	Standard
Coordinate System and Unit Selections	Cartesian (XY) and polar (RA) Decimal/degree or deg/min/sec Direct conversion of English and Metric units Selectable numeric resolution
Measurement Types	Coordinate point Line Radius and diameter Included angle and intersection point Width Distance: X,Y, Polar, Point Line Intersections between lines and circles Gage ball and gage diameters
Tolerances	Size - ANSI (+/-) and ISO (+/, -/, +/-) Locations - True Position, concentricity, and linear Form - Circularity and straightness Orientation - Angularity, parallelism, and perpendicularity Profile - Arc and line Modifiers - MMC and LMC
Graphics Model	Real-time display of measured features Auto scaling graphics model Color coding Zoom-in/out function Build constructions by selecting features Click and drag to select features
Data Reduction	Calculate from edge detection data or previously measured features Best fit (Gaussian), minimum or maximum
Datum Operations	Origin set Skew alignment Axis preset Translate origin and rotate axes Construct from basic dimensions
Supported CAD File Formats	DXF, IGES, Gerber, Excellon, HPGL
CNC Control	XY worktable positioning Rotary indexing table (if equipped) Edge detection control (when equipped) Control external devices with digital I/O channels
Supported Digital Readouts	Q-Check® DRO
Data Output	Configurable hard copy report Default and custom report Headers/comments Color coded on-screen display Configurable data export to Excel or database Run-time overrides Print graphics model
Editing	Undo, insert, delete, change, and copy steps Interactive editing while measuring Standard, condensed and expanded listings Advanced step editor
Calibration Utilities	Wall Effect compensation, Edge detection search parameters
Math / Logic Functions	Copy and step & repeat: XY or RA offsets, Math operations, Branch-on-condition, and if-then-else statements



Confidence. When Results Matter.™

World Headquarters: Rochester, NY, USA • 585.544.0400 • www.ogpnet.com

OGP Shanghai Co, Ltd: Shanghai, China

86.21.5045.8383/8989 • www.smartscope.com.cn

OGP Messtechnik GmbH: Hofheim-Wallau, Germany

49.6122.9968.0 • www.ogpmesstechnik.de

Optical Gaging (S) Pte Ltd: Singapore • 65.6741.8880 • www.smartscope.com.sg